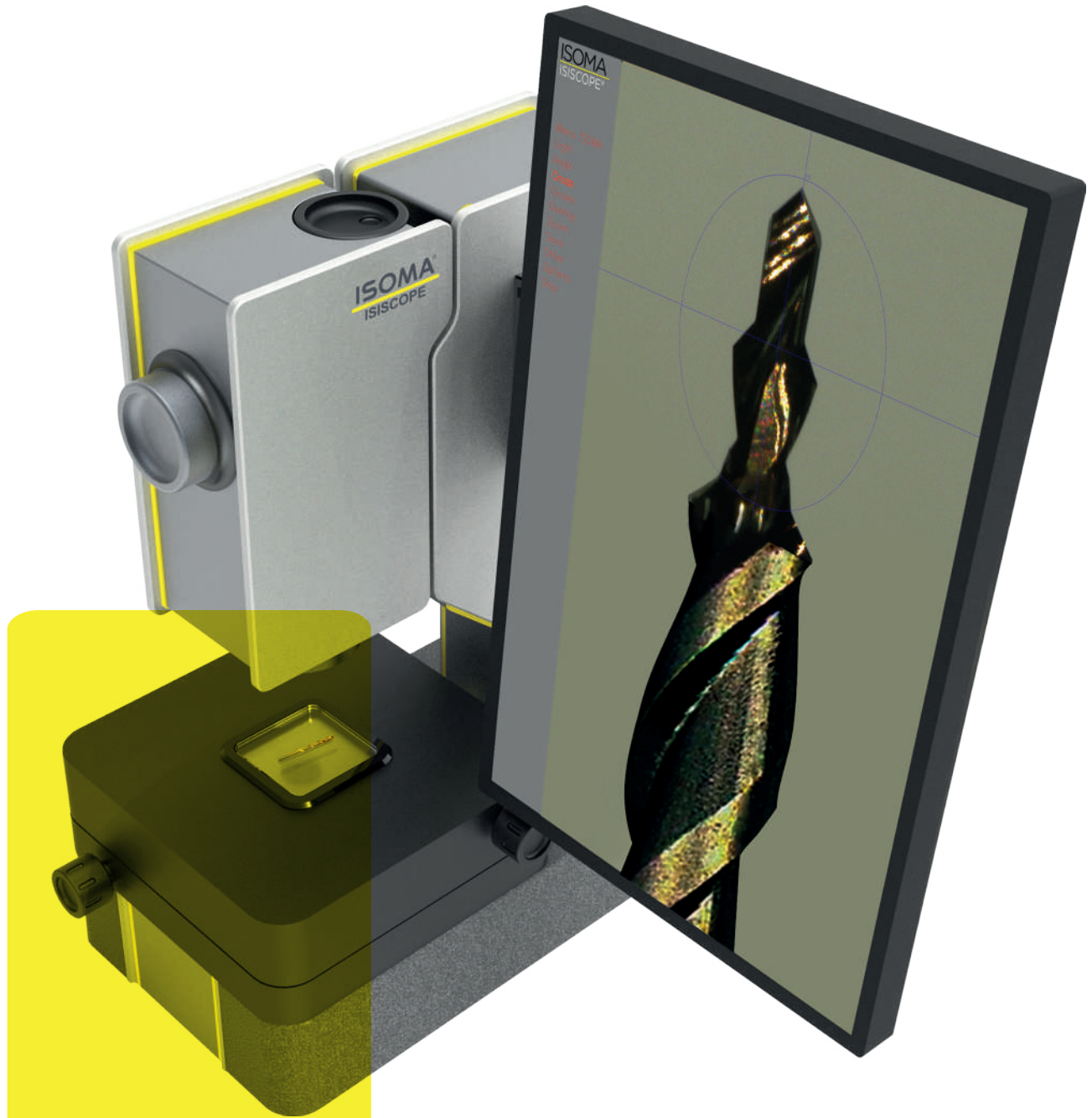
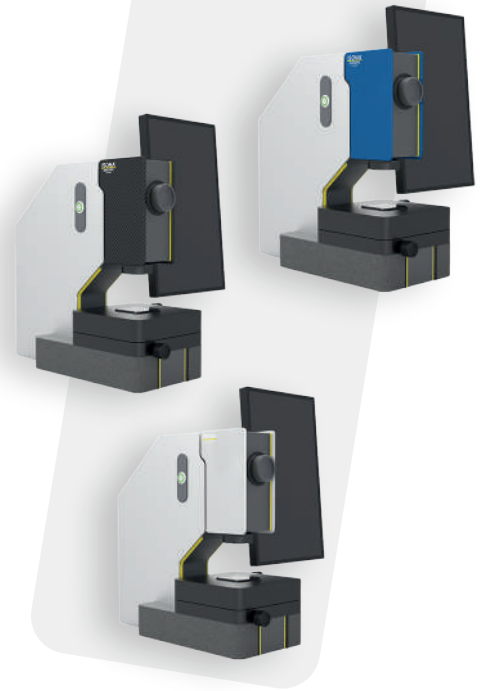


ISOMA[®]



ISIscope[®] | EN

ISIScope®



Concept

The compact workshop measuring microscope is made for measuring and observing precision parts beside you machines. The simplest operation by the Isoma button and a complete integration of lighting and zoom allows an easy operation for everyone.

Benefits



Ergonomic working thanks to independent Screen configurations.



Highest image quality at all zoom levels for optimal part recognition.



The latest electronics and software always available and can be retrofitted. All microscopes with the same soft and electronic hardware.



Guarantees fast and precise measurement results and thus high efficiency.



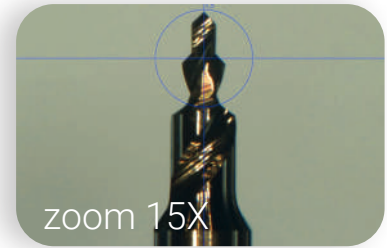
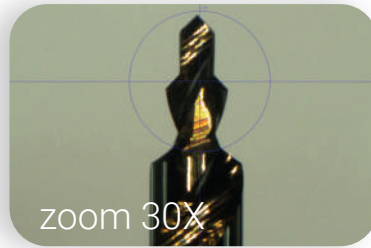
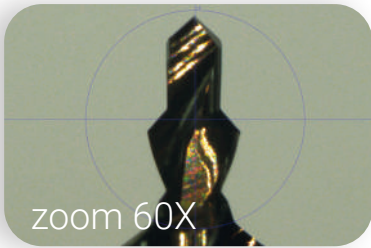
Operable with oily fingers, gloves or ESD protective equipment.



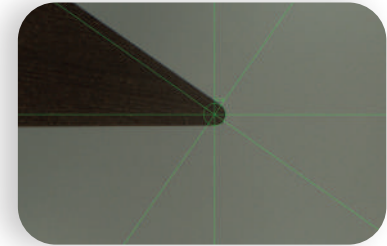
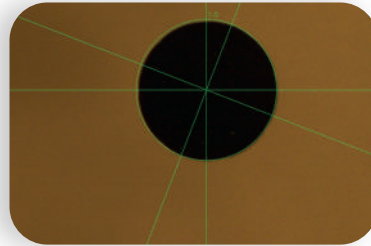
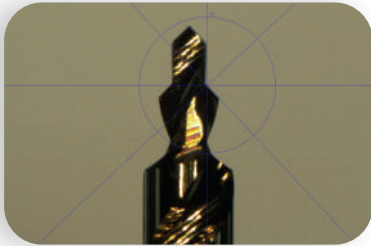
Integrated zoom, with calibrated reticle and measuring function. No more conversion of radii.

Functions

- Integrated three level Zoom without interpolation for perfect images.

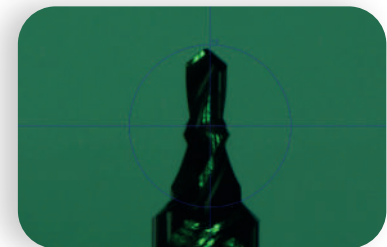
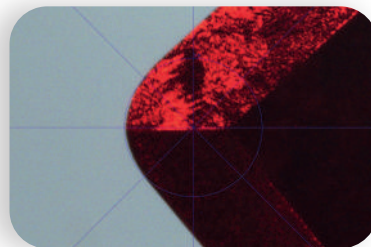
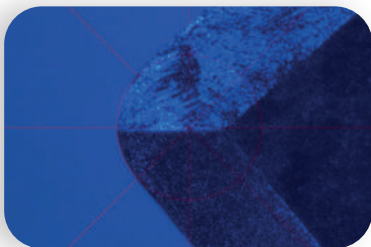


- Precise angle and distance measurement.

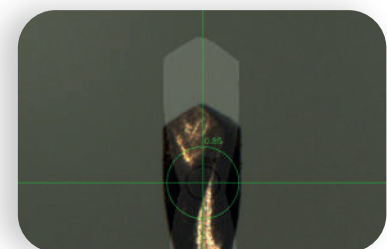
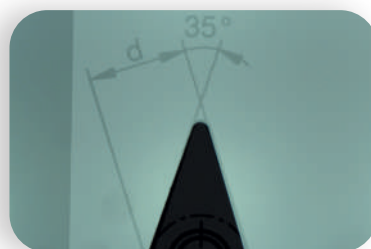
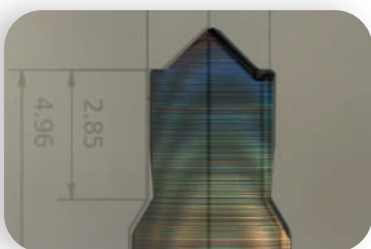


- Intuitive and industrial Human-Machine Interface thanks to ISOMA-Button.
- Easy to use even with gloves, ESD protective equipment or oily fingers.

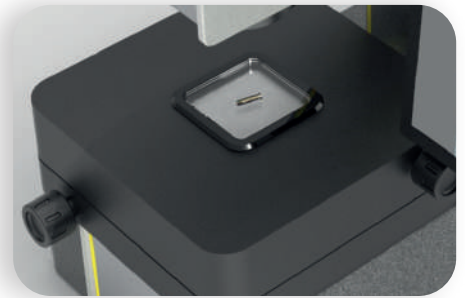
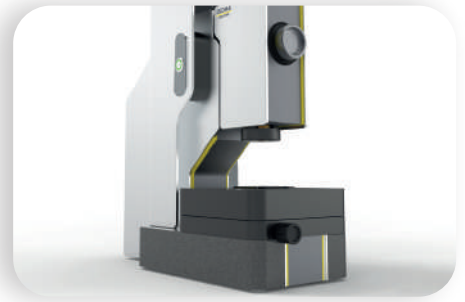
- Integrated light with choice of color and intensity regulation.



- Integrated image capture and data transmission. | Overlay from your PDF drawing. | ISI-overlay by a master part.



Measuring table



- Precision guides on rollers with a range of 50x50mm.
- Integrated LED lighting with adjustable color selection and intensity.
- Two digital rules: 140nm resolution, fully encapsulated and integrated for X-Y coordinate measurement with reading at 0.001 mm.
- An isostatic support for mounting devices.

Screen configurations:

- Integrated left or right.



- Integrated 43".



Option for personalization of the cover:



Technical Data

Product Code	ISIscope®
Field of view resolution	ZOOM 15x 7x9.3mm (5.6µm/px) ZOOM 30x 3.5x4.65mm (2.8µm/px) ZOOM 60x 1.8x2.3mm (1.4µm/px)
Measuring table	50x50mm measuring range with digital measuring rulers and 140nm resolution
Screen	Integrated 15" screen or 43" with flexible connection for ergonomic lateral or frontal use
Base	Granite base for stability and accuracy which contains a vertical axis with 50 mm range
Isoma-Button	Intuitive and industrial operation thanks to the Isoma control button
Interfaces	Power supply 110-230V AC, 8-4A
Weight	18 kg
General	Dimensions 220 x 470 x 430 mm

Options

ISOperformance	Exchange of electronics and software at the latest version during calibration
Saphir	Measuring base made of sapphire crystal
Overlay	Software option PDF overlay and template as master reference part

ISOMA GmbH

Industriestrasse 37a

2555 Brügg b. Biel

+41 32 366 00 20

www.isoma.ch